



VE Desktop for HP Software

The only WAN emulation technology embedded in HP LoadRunner and Performance Center 9.5

HP Software
Certified Application



A Superior Offer Just Got Better!

Upgrade to HP LoadRunner or Performance Center 9.5 and have access to WAN emulation directly while load testing for the most successful application performance testing results. Best practices for load testing have shown that adding WAN emulation to the process optimizes the accuracy of your performance test results.

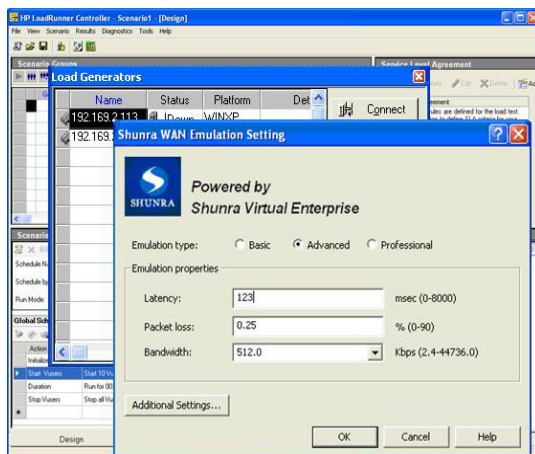
Access to the only HP certified WAN emulation solution on the market that was co-developed by HP Software and Shunra offers new powerful benefits:

- Enables each load generator to emulate a different network location's transaction response time
- Eliminates the need to deploy load generators remotely
- Aggregates end-to-end results into a single database
- Replaces LoadRunner WAN Emulation (MWE), last seen in LoadRunner version 8.1 (released July 2005)
- Advocates thorough performance testing not achieved with HP LoadRunner alone
- Extends existing testing scripts with a click of a button

Since this is a co-developed solution, it is seamlessly integrated and intuitive to configure and use. There are no script edits required, no limits on test scheduling, and results are automatically saved within the scenario. Also, your statistics can automatically be sorted by emulated location.

How does WAN Emulation work with load testing?

When configuring WAN emulation within HP LoadRunner, there are no script changes required. For more advanced configurations, use



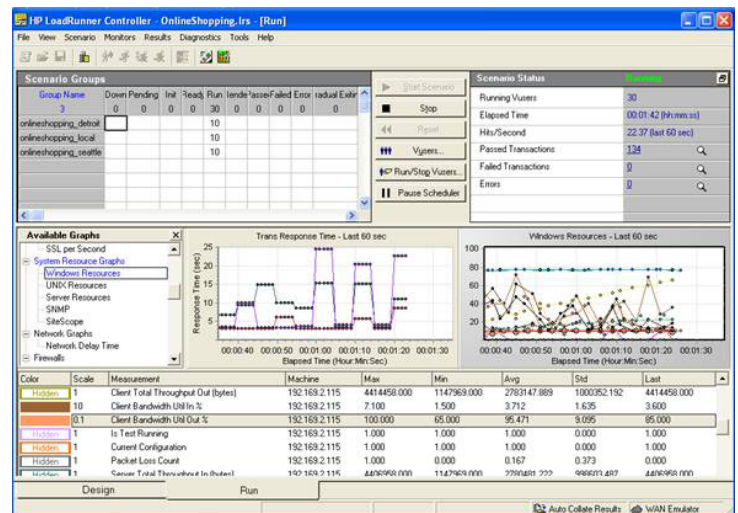
Step 1: Name each emulated location and configure your settings

Eliminate Remote Load Generators

- » No need to install and manage load generators in remote offices around the world
- » Benefit directly from more accurate load testing
- » Ability to schedule on your time, re-run, or configure network aware testing
- » Enable scripts to act as if they are in any location

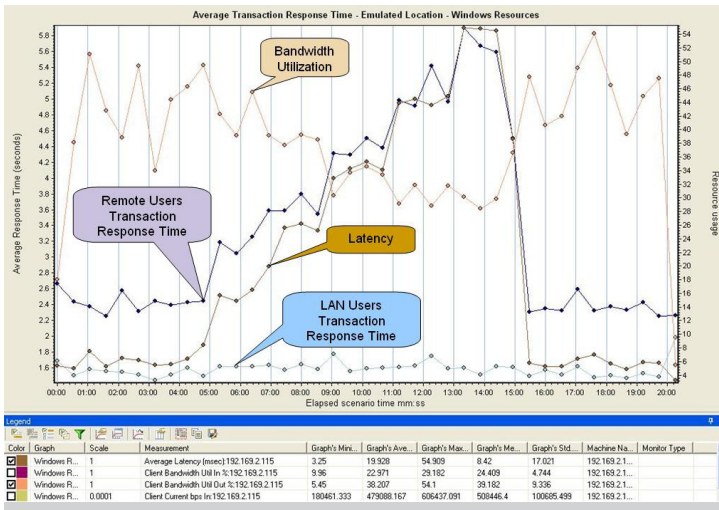
the Network Editor capability to select advanced network settings no longer tied to a server. Key advanced testing options include:

- Jitter and packet loss patterns
- Asymmetric bandwidth
- Congestion
- Link Failures



Step 2: Run a WAN emulation test

For every Load Generator configured to use WAN emulation, you will automatically get real-time network metrics in one location, so that end-to-end correlations can be easily made.



Step 3: Correlate all your results

WAN Emulation with Load Testing is an Essential Best Practice

Defining a valid load test environment is complex. If the environment does not reflect real-world conditions it is probable that the results and decisions made to deploy the application will not be valid. Shunra's experience in helping customers maximize the effectiveness of their load testing process has shown that without incorporating the impact of the WAN on the production infrastructure, the results of load tests are usually incomplete. Use of Shunra WAN emulation along with load testing enables the detection of:

- Latency impact** – Latency causes the transactions and sessions to stay open longer than they would on a LAN. Without incorporating the WAN effects of delay into a load test, memory usage, thread usage, and other critical server resources can be significantly understated.

- Bandwidth limitations** – Bandwidth limits how much data can be transferred in a certain amount of time. Its constraints affect transactions “in-flight” causing them to take longer to complete and impacting important server resources.
- Network impact** – Where specific response time goals are being targeted, it is important to incorporate the overall effect of the network into testing to examine the impact on total response time. Shunra enables you to accurately assess total response time for remote users prior to deployment, and can analyze the breakdown of total response time into the client, network, and server components. This enables users to diagnose and resolve transactions that will not consistently meet your response time goals.
- Root cause of performance problems** – You'll receive **VE Analyzer** as part of your VE Desktop for HP Software purchase. VE Analyzer adds a new dimension of insight into the performance of applications and individual transactions across the network, pinpointing the root cause of performance problems.

Take advantage of a special discount on Shunra's VE Network Catcher with a purchase of VE Desktop for HP Software!

Test and troubleshoot using true-to-life network conditions with **VE Network Catcher** -- a highly flexible agent-less network monitor that lets you simply and quickly record, import and replay production network conditions such as latency, packet loss and route changes. VE Network Catcher now offers a Remote Recording capability to record WAN behavior from a remote location back to your data center, or to any other location.

Add VE Desktop for HP Software to the HP LoadRunner 9.5 Upgrade Now!

Go to www.shunra.com and request to be contacted, or ask your HP LoadRunner sales representative about WAN emulation

Or contact Shunra directly at: **1.877.474.8672**

To see an online user video, go to:
<http://www.shunra.com/ve-for-hp.php>



SHUNRA
 SHUNRA
www.shunra.com

Call your Local office TODAY to find out more!

North America, Headquarters
 1800 J.F. Kennedy Blvd. Ste 601
 Philadelphia, PA USA
 Tel: 215 564 4046
 Toll Free: 1 877 474 8672
 Fax: 215 564 4047
info@shunra.com

Israel Office
 20 Hata'as Street
 Kfar Saba
 44425, Israel
 Tel: +972 9 764 3743
 Fax: +972 9 764 3754
info@shunra.com

European Office
 73 Watling Street
 London
 EC4M 9BJ
 Tel: +44 207 153 9835
 Fax: +44 207 285 6816
sales@shunra.com



**Application
 Performance
 Intelligence**